



General Purpose Laundry Tray Pump

- ▶ **Cast Aluminum Construction**
- ▶ **Buna-N Mechanical Seal and O-Ring**
- ▶ **1-1/4" NPT Suction and Discharge Port**
- ▶ **Maximum Working Pressure 50 PSI**
- ▶ **Maximum Temperature 180° F**
- ▶ **Maximum Flow 24 GPM**
- ▶ **Maximum Head 11 Ft. (5.2 PSI)**
- ▶ **Self-cleaning, Semi-open Impeller**
- ▶ **1725 RPM, 1/4 HP 115VAC Single Phase Open Drip Proof (ODP) 48Z Frame Motor**



Model 3201-96

The AMT Laundry Tray pump is a single stage, multi-vane open impeller unit. It is designed as a "laundry tray" pump but can be used for most gravity fed general service pumping applications. The open impeller design makes it particularly adaptable to dirty as well as clean liquids and is inherently resistant to clogging. The pump is constructed of cast aluminum and features 1-1/4" NPT suction and discharge ports. Each unit is equipped with a Buna-N mechanical shaft seal and O-ring casing seal to prevent leakage. Pump is powered by a 1725 RPM, 115VAC, 1/4 HP motor. This model is capable of generating up to 11 ft. of head (5.2 PSI) and up to 24 gallons per minute.

The AMT Laundry Tray pump is readily available "Off-the-Shelf" for fast 24 hour shipment. For use with non-flammable liquids compatible with pump component materials.

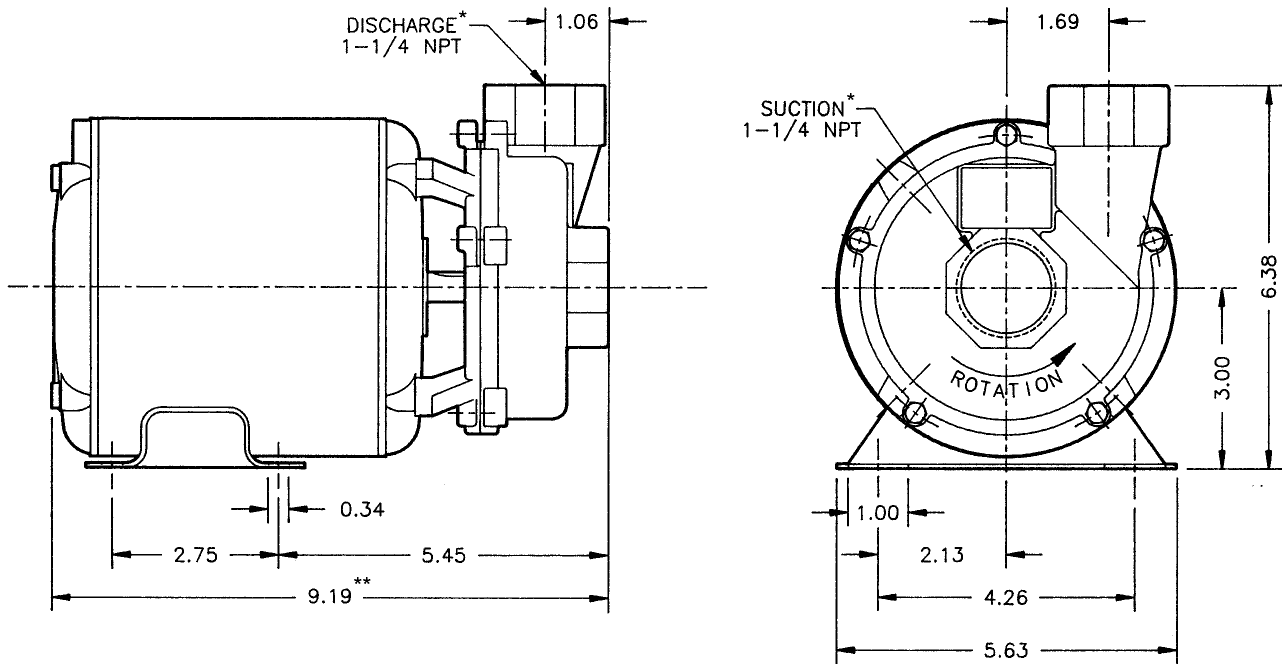
Performance of Laundry Tray Pump



Capacity in US Gallons Per Minute @ 1725 RPM

*Convert to PSI, divide by 2.31 Liquid-Water specific gravity 1.0

General Purpose Laundry Tray Pump



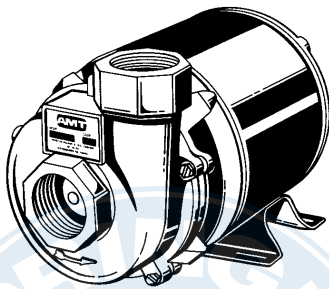
Model No.	HP	PH	ENC	Voltage @ 60 Hz	Full Load Amps	Pump Construction	Ship Wt.
3201-96	1/4	1	ODP	115V AC	4.5	Aluminum	13 Lbs.

(*) Standard NPT (female) pipe thread.

(**) This dimension may vary due to motor manufacturer's specifications.

NOTE: Dimensions have a tolerance of $\pm 1/8"$.

NOTE: Electric supply for **ALL** motors must be within $\pm 10\%$ of nameplate voltage rating (e.g. 230V $\pm 10\%$ = 207 to 253).



Standard Features

- Cast Aluminum Construction
- Buna-N Mechanical Seal and O-Ring
- 1-1/4" NPT Suction and Discharge Ports
- Maximum Working Pressure 50 PSI
- Maximum Temperature 180° F
- Maximum Flow 24 GPM
- Maximum Head 11 Ft.
- Self-cleaning, Semi-open Impeller
- 1725 RPM, 1/4 HP 115V AC Single Phase, Open Drip Proof (ODP) 48Z Frame Motor
- Available "Off-the-Shelf" for Same Day Shipment

ots
OFF THE SHELF
PUMPS

See price book page 28

The Gorman-Rupp Company reserves the right to discontinue any model or change specifications at any time without incurring any obligation.

CP75-76/0904